

CERT

(COMMUNITY EMERGENCY RESPONSE TEAM)

&

Disaster Preparation



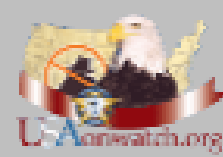


What is CERT?

Community Emergency Response Team (CERT)

- ♦ FEMA (Federal Emergency Management Agency)
- ♦ Volunteer emergency workers
- ♦ Specific training in basic disaster response skills
- ♦ Supplement existing emergency responders in the event of a major disaster
- ♦ Assist family, neighbors, and community

Harris County Citizen's Corps



- **Community Emergency Response Team**
- **Fire Corps**
- **Medical Reserve Corps**
- **Volunteers in Police Service**
- **Neighborhood Watch**



CERT Training

CERT training is **FREE** and takes about 24 hours
(8 each 3 hours classes)

Participants learn how to:

- Identify and anticipate hazards
- Reduce fire hazards in the home and workplace
- Extinguish small fires
- Assist emergency responders
- Conduct light search and rescue
- Set up medical treatment areas
- Apply basic medical techniques
- Help reduce survivor stress



8-week CERT Course

Covers the following:

- ☐ Disaster Preparedness
- ☐ Small Fire Suppression
- ☐ Medical Operations and Triage I
- ☐ Medical Operations and Triage II
- ☐ Light Search and Rescue
- ☐ Disaster Psychology
- ☐ Terrorism Awareness
- ☐ Disaster Simulation Drill

A decorative graphic in the top-left corner of the slide, featuring a portion of the United States flag with white stars on a blue field and red and white stripes.

Who should take CERT training?

- People interested in personal and neighborhood preparedness
- Neighborhood Watch groups
- Community leaders
- Parents
- Communities of faith
- Scouting and youth organizations
- Students, teachers, and administrators
- Members of clubs and civic organizations
- Basically - EVERYONE



What do CERT teams do in an emergency?

CERT teams help provide:

- ◆ Critical support by giving immediate assistance to victims
- ◆ Providing damage assessment information to first responders
- ◆ Organizing other volunteers at a disaster site
- ◆ Provide a workforce for performing duties such as shelter support, crowd control, and evacuation
- ◆ Volunteers help themselves, their family, and others until trained emergency personnel can arrive



About Cy-Fair CERT

Cy-Fair CERT is a 501(c)(3) organization made up of graduates of CERT training in the Cy-Fair area. Monthly meetings are held to offer additional training, guest speakers, and educational opportunities.

The 8-week CERT Course covers the following:

- ☐ Disaster Preparedness
- ☐ Small Fire Suppression
- ☐ Medical Operations and Triage I
- ☐ Medical Operations and Triage II
- ☐ Light Search and Rescue
- ☐ Disaster Psychology
- ☐ Terrorism Awareness
- ☐ Disaster Simulation Drill

Additional Training:

Animal Response in Disasters
Chainsaw Safety
CPR/First Aid
Incident Command System (ICS)
Moulage
Skywarn
Traffic Control

*“Doing the Greatest Good for
the Greatest Number of People”*

Also, training for MRC (Medical Reserve Corps)



Cy-Fair CERT Emergency Supplies

Centralized Supply Container

- ♦ Cy-Fair CERT has a centralized Container with emergency supplies that can be used by all Cy-Fair CERT members.

Two Neighborhood S.A.F.E. locations

- ♦ There are two S.A.F.E. (**S**upplies **A**vailable **F**or **E**mergency) in area neighborhoods in secure locations so that there will be close access to essential emergency supplies when needed.

Mobile S.A.F.E

- ♦ A 6x10 trailer is equipped for emergency response and displayed at various community events.

Cy-Fair CERT opened the shelter at Jersey Village Baptist Church 4/18/16



A graphic of the American flag, showing the stars and stripes, is positioned in the top-left corner of the slide, partially overlapping the title area.

Disaster Preparedness

Are you prepared?



Some threats to our region:

- Hurricanes
- Floods
- Tornado
- Heat
- Drought
- Wildfire
- Winter Weather
- Chemical Plant Fire
- Pipeline Incident
- Oil Spill
- Terrorism
- Urban Fire
- Building Collapse
- Utility Outages
- Rail Accident
- Mass Casualties
- Epidemic

Flooding (Allison) 2001

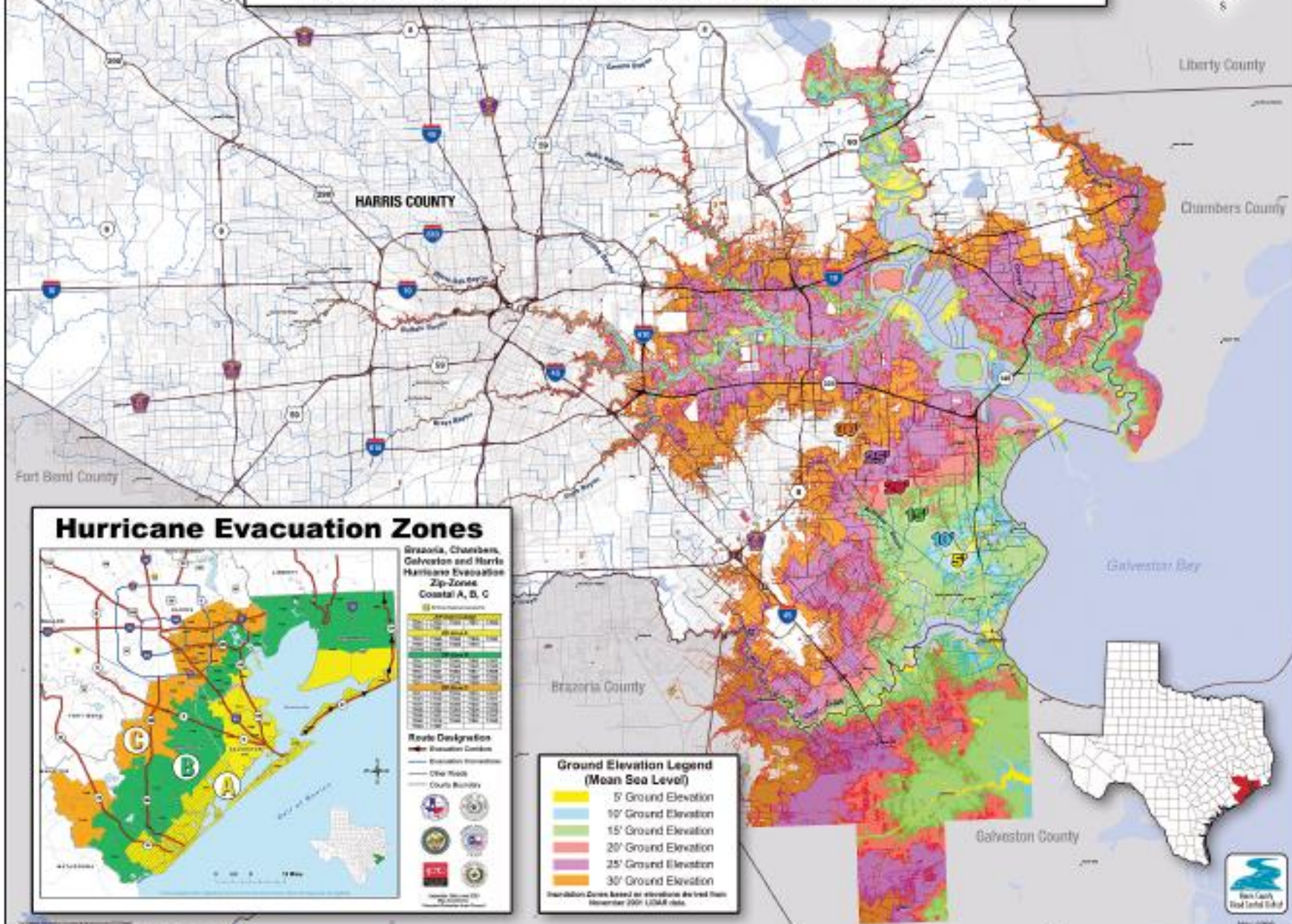


Flooding (Tax day) 2016

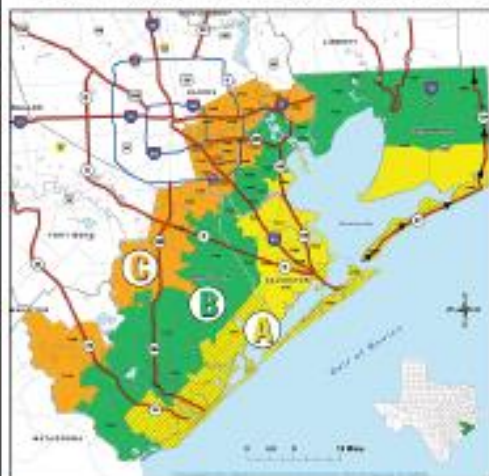


Harris County Coastal Ground Elevations

Use this map to estimate your property's flood risk from the National Weather Service forecasted storm surge elevations



Hurricane Evacuation Zones



Brazoria, Chambers, Galveston and Harris
Hurricane Evacuation
Zip Zones
Coastal A, B, C

Zip Zone	Evacuation Zone
77001	A
77002	A
77003	A
77004	A
77005	A
77006	A
77007	A
77008	A
77009	A
77010	A
77011	A
77012	A
77013	A
77014	A
77015	A
77016	A
77017	A
77018	A
77019	A
77020	A
77021	A
77022	A
77023	A
77024	A
77025	A
77026	A
77027	A
77028	A
77029	A
77030	A
77031	A
77032	A
77033	A
77034	A
77035	A
77036	A
77037	A
77038	A
77039	A
77040	A
77041	A
77042	A
77043	A
77044	A
77045	A
77046	A
77047	A
77048	A
77049	A
77050	A
77051	A
77052	A
77053	A
77054	A
77055	A
77056	A
77057	A
77058	A
77059	A
77060	A
77061	A
77062	A
77063	A
77064	A
77065	A
77066	A
77067	A
77068	A
77069	A
77070	A
77071	A
77072	A
77073	A
77074	A
77075	A
77076	A
77077	A
77078	A
77079	A
77080	A
77081	A
77082	A
77083	A
77084	A
77085	A
77086	A
77087	A
77088	A
77089	A
77090	A
77091	A
77092	A
77093	A
77094	A
77095	A
77096	A
77097	A
77098	A
77099	A

Route Designation



Ground Elevation Legend (Mean Sea Level)

- 5' Ground Elevation
- 10' Ground Elevation
- 15' Ground Elevation
- 20' Ground Elevation
- 25' Ground Elevation
- 30' Ground Elevation

Elevation Data based on elevations derived from November 2001 USAR data



May 2006

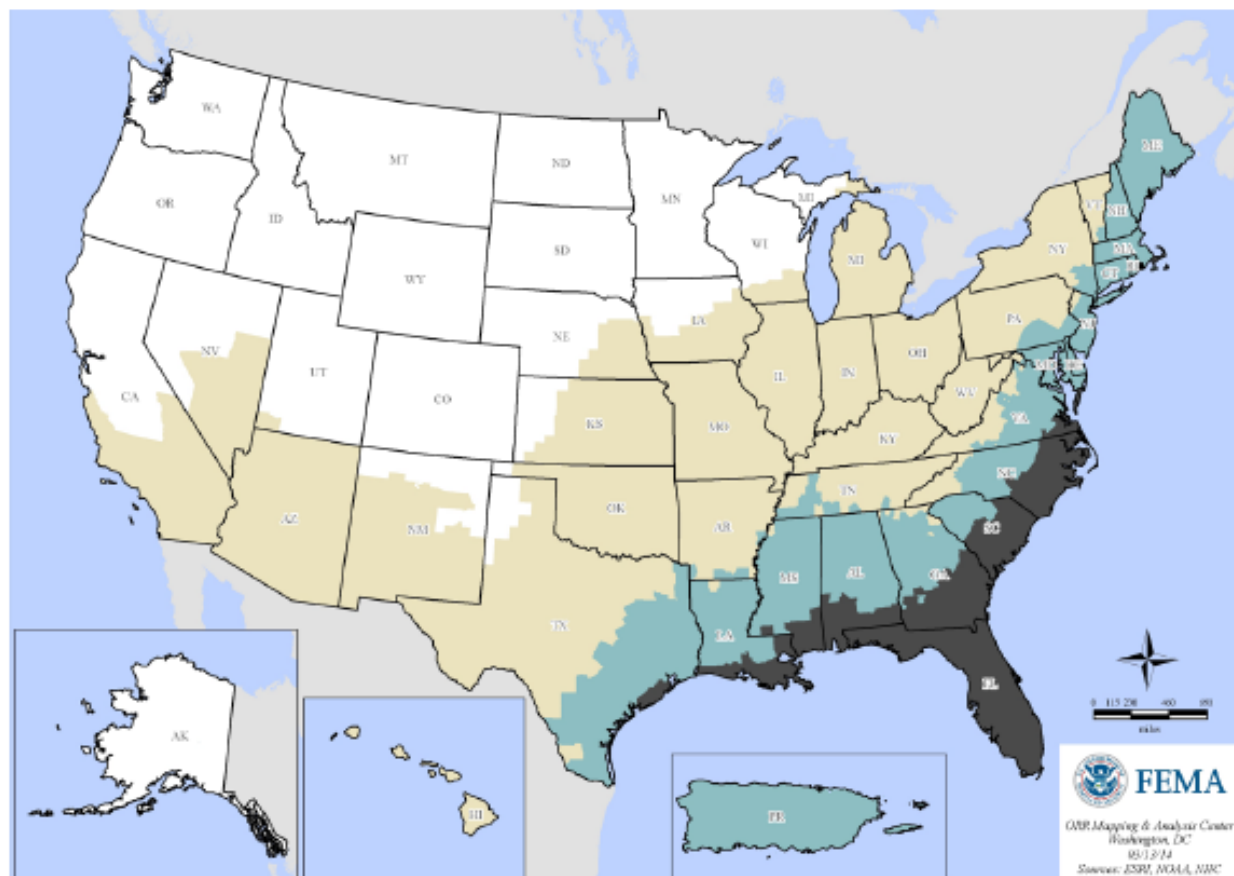
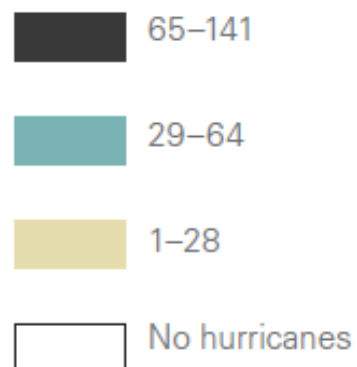
Hurricane Preparedness



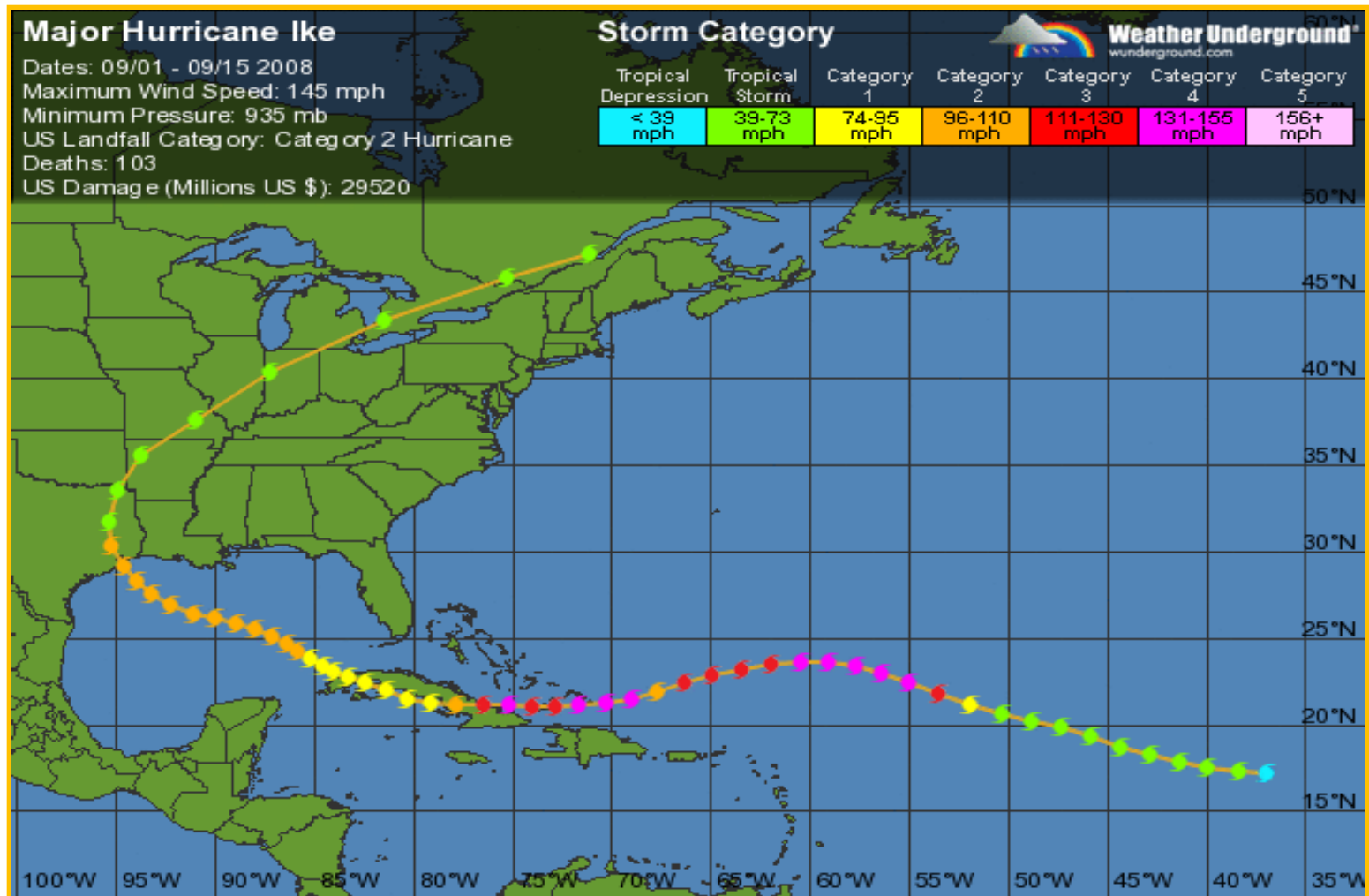
KNOW THE RISK

Frequency of Hurricane and Tropical Storm Activity by County Atlantic Data: 1851–2012 ~ Pacific Data: 1949–2012

This map depicts the frequency with which counties have experienced a hurricane or tropical storm based on a 125-mile-wide storm path around the center point of the storm.



Hurricanes: Life Cycle



Hurricane Ike: September 1-15, 2008

Hurricane Ike



Fundamentals of Survival



- 1. Make a kit**
- 2. Have a plan**
- 3. Stay informed**
- 4. Be involved**

Have a Plan



- **Will you stay or go?**
- **Where will you go?**
- **When will you leave?**
- **How will you get there?**
- **Who will you take with you?**
- **How will you stay in touch?**
- **Who will know where you are?**
- **When will you return?**

Make A Kit

**If disaster struck today,
would you have the
basic supplies to
survive for 5 - 7 days?**



Sheltering in Place



- **Stay inside**
- **Lock doors, close windows and vents**
- **Turn off fans, central air & heating systems**
- **Move to a ground-level interior room with few windows**

Aftermath: Power Outage

**Parts of Harris County
had no power for
more than a month
after Hurricane Ike.**



Seabrook, TX 9/15/2008

Evacuation Help



- **211 United Way program offers evacuation assistance to those unable to leave on their own.**
- **Must re-register every year.**
- **Do NOT wait until the last minute to sign up!**

Weather Online

National Weather Service: www.nws.noaa.gov



Extreme Weather Workshop

www.hurricaneworkshop.com

THE 2017 HOUSTON/GALVESTON EXTREME WEATHER READY EXPO

Saturday, June 3, 2017 | 10 a.m. – 3 p.m.
George R. Brown Convention Center

**EXTREME
WEATHER
READY EXPO**
A Free Family Preparedness Event



NOAA Extreme Weather INFORMATION SHEET



STATE INFORMATION

To download the latest updated version of this sheet: www.ncddc.noaa.gov/NEWS

TexasOnline.com Emergency Portal	http://emergency.portal.texas.gov
Texas Department of Public Safety (www.txdps.state.tx.us)	512-424-2000
Texas Division of Emergency Management (TDEM) (www.tdems.state.tx.us/tDEM)	512-424-2208
Texas Department of Transportation - DriveTexas™ Highway Conditions (www.DriveTexas.org)	1-800-452-8292
Texas Tourism (www.texas.com)	1-800-888-47EX (4839)
Texas Highway Patrol (www.texas.state.tx.us/thp)	512-997-4102
Texas Highway Patrol Roadside Assistance (Texas only)	1-800-525-5555
Texas Rangers (www.tdems.state.tx.us/TexasRangers/)	512-424-2160
Governor's Office (www.governor.state.tx.us)	1-800-843-5789 (Texas only) or 512-463-2000
Texas Animal Health Commission (www.tahc.state.tx.us)	1-800-550-8342
Texas Attorney General (www.oag.state.tx.us)	1-800-621-0508 or 512-463-2100
Texas Commission on Environmental Quality (www.tceq.state.tx.us)	512-239-1000
Texas Department of Insurance (www.tdi.state.tx.us)	1-800-578-4677 or 512-463-6169
Texas Parks & Wildlife Department (www.tpwd.state.tx.us)	1-800-793-1112
Texas Department of State Health Services (www.dshs.state.tx.us)	1-888-963-7111 or 512-458-7111
Texas Department of Agriculture (http://texasagriculture.gov)	1-800-TELL-TDA (835-5832)
Texas General Land Office (www.glo.texas.gov)	1-800-998-4456 or 512-463-5001
National Weather Service Forecast Office (Houston/Galveston) (www.weather.gov/houston)	281-337-5074
National Weather Service Forecast Office (Brownsville) (www.weather.gov/brownsville)	956-504-1432
National Weather Service Forecast Office (Corpus Christi) (www.weather.gov/corpuschristi)	361-289-0959
National Weather Service Forecast Office (Lake Charles) (www.weather.gov/lakecharles)	337-477-5285
NOAA National Weather Service Southern Region	www.nws.noaa.gov
US Coast Guard, 8th District	www.uscg.mil/8th
StormSmart Coasts	http://tx.stormsmart.org
Brownsville Public Utilities Board (www.brownsville-pub.com)	956-883-6300
CenterPoint Energy (www.centerpointenergy.com)	1-800-752-8036
Entergy (www.entropy-entegy.com)	1-800-ENTERGY (368-3749)
Nueces Electric Cooperative (www.nueceselectric.org)	Power Outage 1-800-9OUTAGE (968-8243)
San Patricio Electric Cooperative (www.sanpatricioelectric.org)	1-800-NEC-WATT (632-9288)
AEP - American Electric Power (www.aep.com)	1-888-740-2220 or 361-364-2220
	1-877-373-4858

FOR EMERGENCIES CALL 911

FOR NON-EMERGENCIES CALL 211

COUNTY INFORMATION

ARANSAS	
Emergency Management	361-790-0100
	www.aransascounty.org/emergency/emgmt
Sheriff	361-729-2222
BRAZORIA	
Emergency Management	979-864-1201
	www.brazoriacounty.com/em
Sheriff	979-864-2392
CALHOUN	
Emergency Management	361-553-4400
	www.calhouncounty.com/emgmt.html
Sheriff	361-553-4646
CAMERON	
Emergency Management	956-547-7000
	www.cameron.tx.us/department/Government/management/index.php
Sheriff	956-554-6700
CHAMBERS	
Emergency Management	409-267-2445
	www.chambers.tx.us/default.aspx?name=emergency_mgt
Sheriff	409-267-8318
GALVESTON	
Emergency Management	1-888-384-2000
	www.gcom.org
Sheriff	409-766-2322 or 281-534-3515
HARRIS	
Emergency Management	713-881-3100
	www.readyharris.org
Sheriff	713-221-6000

JEFFERSON	
Emergency Management	409-835-8757
	www.co.jefferson.tx.us/em.htm
Sheriff	409-835-8411
KENEDY	
Emergency Management	361-595-8527
Sheriff	361-294-5205
KLEBERG	
Emergency Management	361-595-8527
	www.co.kleberg.tx.us/default.aspx?Kleberg_County/Emergency
Sheriff	361-595-8300
MATAGORDA	
Emergency Management	379-323-0707
	www.co.matagorda.tx.us/default.aspx?Matagorda_County/Emergency
Sheriff	379-245-5526
NUECES	
Emergency Management	361-888-0513
	www.co.nueces.tx.us/emergency
MetroCom	361-886-2600
ORANGE	
Emergency Management	409-882-7895
	www.co.orange.tx.us/Emergency_Management.html
Sheriff	409-883-2612
SAN PATRICIO	
Emergency Management	361-364-6208 Ext.110
	www.sanpatricio.tx.us/default.aspx?San_Patricio_County/Emergency
Sheriff	361-364-9600
WILLACY	
Emergency Management	956-689-5456
	www.co.willacy.tx.us/default.aspx?Willacy_County/Emergency
Sheriff	956-689-3576

NATIONAL INFORMATION

American Red Cross	1-800-RED-CROSS (1-800-733-2767)
	www.redcross.org
Centers for Disease Control	www.cdc.gov
Environmental Protection Agency	www.epa.gov
Federal Emergency Management Agency (FEMA)	1-800-621-FEMA (3362)
	www.fema.gov
Agencia Federal para el Manejo de Emergencias (FEMA)	www.fema.gov/espanol
National Oceanic and Atmospheric Administration (NOAA)	www.noaa.gov
National Weather Service	www.weather.gov
Gulf of Mexico Disaster Response Center	oceanservice.noaa.gov/hazards/drc
National Data Buoy Center	www.ndbc.noaa.gov
National Hurricane Center	www.nhc.noaa.gov
National Centers for Environmental Information (NCEI)	www.ncei.noaa.gov
National Environmental Satellite, Data, and Information Service (NESDIS)	www.nhc.noaa.gov/satellite.shtml
US Department of Homeland Security	www.dhs.gov



DOWNLOAD THE FREE NEWS APP

Compatible with iPhone, iPod Touch, and iPad! Search 'NEWS' in the App Store to download on your Apple device.

The National Hurricane Center issues Public Advisories on their website for active tropical cyclones every six hours at 4 a.m., 10 a.m., 4 p.m., and 10 p.m. CDT. When coastal watches or warnings are in effect, Intermediate Public Advisories are issued at either two or three hour intervals between the regular Public Advisories. Special Public Advisories may be issued at any time to advise of an unexpected significant change in the cyclone or when watches or warnings are to be issued.

NATIONAL HURRICANE CENTER MOBILE DATA

Graphical Tropical Weather Outlook RSS/XML feed	www.nhc.noaa.gov/gtwn.xml
Website for Tablets and Smartphones	www.nhc.noaa.gov/mobile

RADIO STATIONS

KLVI 560 AM (Beaumont)	KZFM 95.5 FM (Corpus Christi)
KQXY 94.1 FM (Beaumont)	KLAT 1010 AM (Español-Houston)
KFRQ 94.5 FM (Brownsville)	KTRH 740 AM (Houston)
KNCN 101.3 FM (Corpus Christi)	KUHF 88.7 FM (Houston)

NOAA WEATHER RADIO

Not manufactured by NOAA. NWR receivers can be purchased at many retail outlets and on the Internet.

NOAA Weather Radio (NWR) All Hazards is a nationwide network of radio stations broadcasting continuous weather information directly from a nearby National Weather Service office. NWR broadcasts National Weather Service warnings, watches, forecasts, and other hazard information 24 hours a day.

162.400 MHz	162.425 MHz	162.450 MHz	162.475 MHz	162.500 MHz	162.525 MHz	162.550 MHz
-------------	-------------	-------------	-------------	-------------	-------------	-------------

Evacuations and Special Health Care Needs:

Dial 2-1-1 to register for a ride

If you live in a hurricane EVACUATION ZONE, and you have special health care or transportation needs, you need to make extra efforts to get ready for hurricane season. Hurricane season officially begins June 1 and continues through November 30.

It is critical that you begin now to make your evacuation plans, prepare an emergency kit, and learn evacuation routes. This should be done well in advance.

To find out whether you are living in an evacuation zone, dial 2-1-1 for information. Operators answering the phones at 2-1-1 are also prepared to help you register for transportation and special assistance now, before hurricane season begins.

If you have special health care needs, register by dialing 2-1-1:

Gulf Coast residents with special health care needs (including those who are disabled or medically fragile) who live in evacuation zones and do not have friends or family to help in an evacuation should register for a ride in advance by dialing 2-1-1. The 2-1-1 registry must be dialed IN ADVANCE. Do not wait until a storm is in the Gulf to register for assistance. This service is for people who cannot drive themselves or make transportation arrangements.

If you need transportation, register with 2-1-1:

If you do not have a car or other vehicle, and you cannot get a ride with friends, neighbors or family, register IN ADVANCE for a ride by dialing 2-1-1 or

Texas Health and Human Services Commission

512-973-9203

www.hhsc.state.tx.us

PREPARED BY

The Center for Coasts, Oceans & Geophysics of NOAA's National Centers for Environmental Information under NESDIS

1-866-732-2382 or email: NCEI.info@noaa.gov

To download the latest pdf version of this sheet go to: www.ncddc.noaa.gov/NEWS

Published April 2015

Version 1.0

ReadyHarris.com

[Home](#)

[Prepare](#)

[Connect](#)





Ed Emmett, County Judge



Harris County Judge Ed Emmett became County Judge in 2007. He is the presiding officer of the Harris County Commissioners Court. By Texas law, Judge Emmett is the Director of the Harris County Office of Homeland Security & Emergency Management.

For more information on Judge Emmett, go to www.judgeemmett.org.

Welcome

Welcome to the Harris County Office of Homeland Security and Emergency Management preparedness website.

An involved community is a well prepared community. This site gives you the tools and resources to protect yourself, your family and your property. There are four basic components to being prepared: get a kit, make a plan, stay informed, and get involved.

- [Download All-Hazards Disaster Guide](#)
- [Download 2016 Hurricane Brochure](#)
- [Descargar el 2016 Folleto de Huracanes](#)
- [Download Emergency Essentials List](#)

[For Active Emergency Information \(JIC\)](#)

[Sign Up for Harris County Alerts](#)

[Join Us on Twitter](#)

[Follow us on Facebook](#)

[View our videos on YouTube](#)

[Request a Presentation or Tour](#)

[Contact Us](#)

Beyond the 8-Week CERT Training

- ◆ Specialized Training
 - First aid, CPR, AED
 - NIMS, ICS (FEMA online)
 - SkyWarn
 - Chainsaw certification
 - Traffic control
 - Crowd control
 - Psychological First Aid
 - Moulage
 - FRS/GMRS radio
 - Ham radio



◆ Sources and Links

- <http://www.readyharris.org/>
- <http://www.harriscountycitizencorps.com/>
- <https://www.fema.gov/community-emergency-response-teams>
- <https://www.harriscountyfws.org/>
- <http://www.211texas.org/>
- <http://www.weather.gov/>
- <http://www.hurricaneworkshop.com/>
- <https://www.ncddc.noaa.gov/activities/weather-ready-nation/newis/>
- <http://www.cyfaircert.org/>
- <https://harristxmrc.samariteam.com/>

Thank you!

Questions?

2017 Cy-Fair CERT Rodeo Team





2017 Harris County Citizen Corps CERT RODEO RULES OF THE GAMES (AT A GLANCE)

Station 1 Triage	Station 2 Medical Treatment	Station 3 Gang Plank Team Building Exercise	Station 4 Tower Search & Rescue	Station 5 Fire Suppression	Station 6 Patient Transport
Task: *You will have 5 minutes to triage 25 patients. *Sort: Immediate, Delayed, or Dead. *Next you will have 5 additional minutes to reevaluate and triage again.	Task: *You will have 15 minutes. *6 patients will be marked with injuries. You must perform a head-to-toe assessment. *Evaluate: Immediate, Delayed or Dead. *Treat the injury with available materials and document.	Task: *You will have 15 minutes. *A team of 4 will cover a 20 foot distance on two 8 foot wooden planks with rope handles. *At the turn around, 4 different team members will return to the start/finish line. *Time stops when the last person and the end of the board cross the line.	Task: *You will have 15 minutes to complete the task. *Numbered tennis balls are hidden inside and outside on floors 1 – 3 of the Fire Tower. *Three 2- person teams will search, identify and document the tennis balls. *A whistle will blow giving you a 1 minute warning to get all team members out of the building.	Task: *Working in two person teams, you will approach and suppress 4 small fires. *Returning to your start line you will pass on the fire extinguisher to the next team set.	Task: *You will have 15 minutes to assess three victims, treat and transport. *Each victim will be approached and triaged. *One victim will be transported to a staging area before the next victim can be transported. *Applications will include backboard, chair, and blanket carry skills.
<u>Recommended Team Members</u> (6): Team Leader, Medical Person	<u>Recommended Team Members</u> (8): Medical Team Leader, Scribe	<u>Recommended Team Members</u> (8): Team Leader	<u>Recommended Team Members</u> (8): Operation Team Leader, Scribe	<u>Recommended Team Members</u> (6): Team Leader, Safety Officer	<u>Recommended Team Members</u> (8): Medical Team, Team Leader, Scribe

Station 7 Evidence Identification	Station 8 Cribbing	Station 9 Size-Up	Station 10 Haz-Mat Identification	Station 11 Incident Command
Task: *You will have 15 minutes to search the field and cross the finish line. *A line search will be done across the designated search area. *You will search the field area without breaking your line, stopping only when items are located and your scribe is notified. *Mark location of item	Task: *You will have 15 minutes to complete this task. *A victim will be trapped under a structure. *The team will need to use proper cribbing techniques to extract and transport the trapped victim	Task: *You will have 15 minutes to complete this task. *You will complete a controlled perimeter size-up of a train accident. *You will: gather facts, assess damage, consider probabilities, assess your situation, establish priorities, and complete documentation in order to report back to IC.	Task: *You will have 15 minutes to complete this task. *You will have to identify the hazards, understand the risks, and the threat and advise appropriate actions and safety measures *ERG book provided to identify hazards and other information to document.	Task: *You will select an Incident Commander for the entire Event. *All teams must have and Incident Commander at the IC tent at all times. *He/she is allowed to participate and need not stay at IC all day as long as IC is transferred to another team member. *The IC is responsible for organizing teams per event, communication, documentation and reporting all event scores at the end of each station exercise. *Any station evaluations missing will earn 0 points for that event.
<u>Recommended Team Members</u> (12): Team Leader, Scribe	<u>Recommended Team Members</u> (12): Team Leader, Medical Person, Safety Officer, Cribbing	<u>Recommended Team Members</u> (12): Team Leader, Safety Officer, Scribe	<u>Recommended Team Members</u> (8): Team Leader, Scribe	<u>Recommended Team Members</u> (2): Incident Commander, Scribe



Keeping People Interested

- ◆ Monthly meetings
 - Informative guest speakers and programs
 - Hands on demonstrations
 - Skills review
 - Displays
- ◆ Disaster Drills
- ◆ Annual CERT RODEO participation
- ◆ Our team coordinates 8-week CERT courses which are offered at least twice each year to Cy-Fair area residents. The courses help participants understand there is more for them to do besides just being personally prepared.



Staying Connected

- ◆ Frequent e-mail distribution on service opportunities and activities
- ◆ Website (www.cyfaircert.org) has an online calendar of events, plus volunteer opportunities and resources
- ◆ Monthly General meetings with educational program
- ◆ Meetings of task-oriented committees as needed





Course Module Descriptions

Disaster Preparedness:

Introduction to disasters, impact of disasters on infrastructures, the role of CERT's in disaster response

Small Fire Suppression:

Identifying and reducing potential fire hazards, basic fire suppression strategy, resources, and techniques.

Medical Operations & Triage – Part 1:

Treatment strategies for life threatening conditions and principles of triage



Course Module Descriptions

Medical Operations & Triage – Part 2:

Head-to-toe body assessment, treatment for various injuries.

Light Search & Rescue:

Techniques for size-up and search, lifting, cribbing and removing victims, rescuer safety.

Disaster Psychology:

Steps to reduce stressors during and after a disaster, how to organize teams to work systematically with one another

A decorative graphic in the top-left corner of the slide, featuring a portion of the United States flag with white stars on a blue field and red and white stripes, curving along the top edge.

Course Module Descriptions

Terrorism Awareness:

The definition of terrorism and terrorist goals. The weapons that terrorists are known or are suspected to have and the risk posed by various terrorist weapons. Cues that help to identify a when a terrorist attack has occurred or may be imminent. CERT protocols for terrorist incidents and protective action following an event

Disaster Simulation Drill:

Practice the skills you have learned with your classmates.

An American flag graphic is located in the top-left corner of the slide, featuring a blue field with white stars and a red field with white stripes.

There is a sign-up list for future CERT classes here today.

Leave your name, email address, and phone number if you want to be part of this

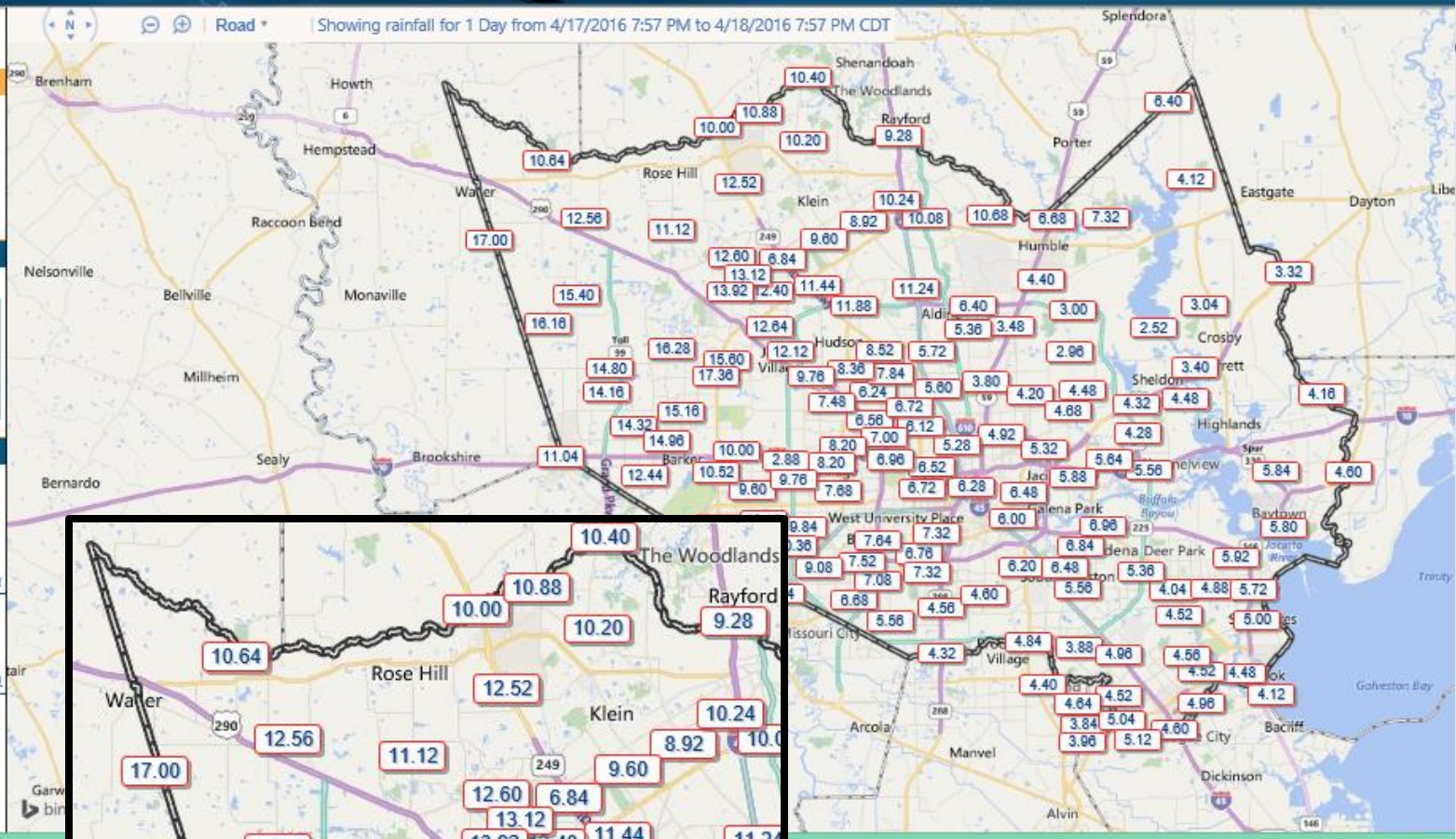
Training and starter backpack are free



**This is the usual view
of Langham Creek
High School**



**Langham Creek High School
on FM529 in NW Houston
retention pond the morning
of 18 April 2016**





Flood Waters

- ◆ Many contaminants – not clean rainwater!
- ◆ Hidden dangers – holes, open drains, submerged objects
- ◆ Wildlife – snakes, ant colonies, etc.
- ◆ Strong currents possible
- ◆ Don't drive until the water recedes and you know your vehicle ground clearance is adequate.
- ◆ Roadbeds may give way after water recedes due to damage from saturation or washout.



About Cy-Fair CERT

Cy-Fair CERT is a 501(c)(3) organization made up of graduates of CERT training in the Cy-Fair area. Monthly meetings are held to offer additional training, guest speakers, and educational opportunities.

The 8-week CERT Course covers the following:

- ☐ Disaster Preparedness
- ☐ Small Fire Suppression
- ☐ Medical Operations and Triage I
- ☐ Medical Operations and Triage II
- ☐ Light Search and Rescue
- ☐ Disaster Psychology
- ☐ Terrorism Awareness
- ☐ Disaster Simulation Drill

Additional Training:

Animal Response in Disasters
Chainsaw Safety
CPR/First Aid
Incident Command System (ICS)
Moulage
Skywarn
Traffic Control

*“Doing the Greatest Good for
the Greatest Number of People”*

Also, training for MRC (Medical Reserve Corps)



Cy-Fair CERT Emergency Supplies

Centralized Supply Container

- ♦ Cy-Fair CERT has a centralized Container with emergency supplies that can be used by all Cy-Fair CERT members.

Two Neighborhood S.A.F.E. locations

- ♦ There are two S.A.F.E. (**S**upplies **A**vailable **F**or **E**mergency) in area neighborhoods in secure locations so that there will be close access to essential emergency supplies when needed.

Mobile S.A.F.E

- ♦ A 6x10 trailer is equipped for emergency response and displayed at various community events.



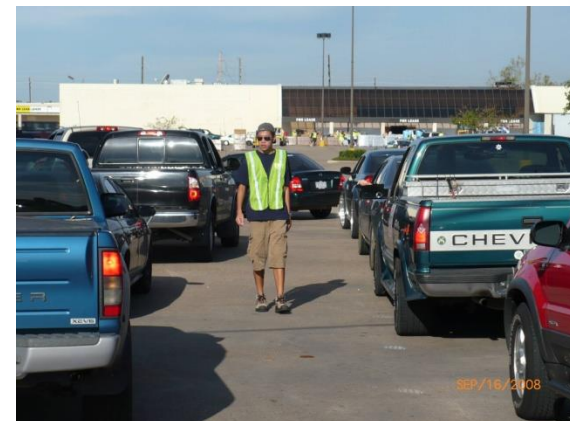
Other Community Support

- ◆ Organized water supply drive at Berry Center to support fire fighters during Tri-County Wildfires in 2011
- ◆ Assisted HCPHES with Cypress and Northwest Harris County Community Assessment for Public Health Emergency Response (CASPER) survey in 2015
- ◆ CFCARC supports area Field Day events to test radio communications and equipment.

Hurricane Ike Experience

Cy-Fair CERT Response to Hurricane Ike

- ◆ Staffed the call center phone bank of Harris County Homeland Security and Emergency Management
- ◆ Individual members assisted their neighborhood by helping neighbors and clearing debris off the streets
- ◆ Assisted in FEMA POD supply logistics at Reliant Center
- ◆ Volunteered at FEMA PODs throughout Harris County
- ◆ Picked up MRE and water at FEMA PODs and delivered to immobile seniors citizens living in apartment complexes in low-income areas
- ◆ Distributed food for Meals on Wheels program



Going Beyond the 8-Week CERT Training

- ◆ After-action lessons-learned debriefings
- ◆ Specialized additional training
 - First aid, CPR, AED
 - NIMS, ICS (online)
 - SkyWarn
 - Chainsaw certification
 - FRS/GMRS radio
 - Amateur (Ham) radio
 - Traffic control
 - Crowd control
 - Psychological First Aid
 - Moulage

